

MONTHLY MEMBERSHIP PROGRESS REPORT

District 13 OH3

Results as of: 6/30/2020

GMT:

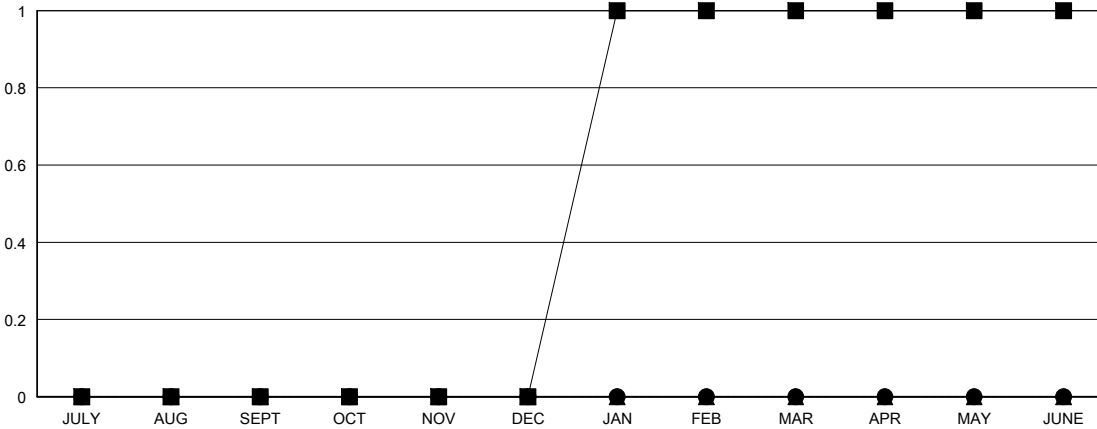
LOCATION OHIO

GMT CA

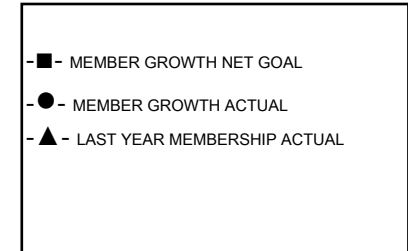
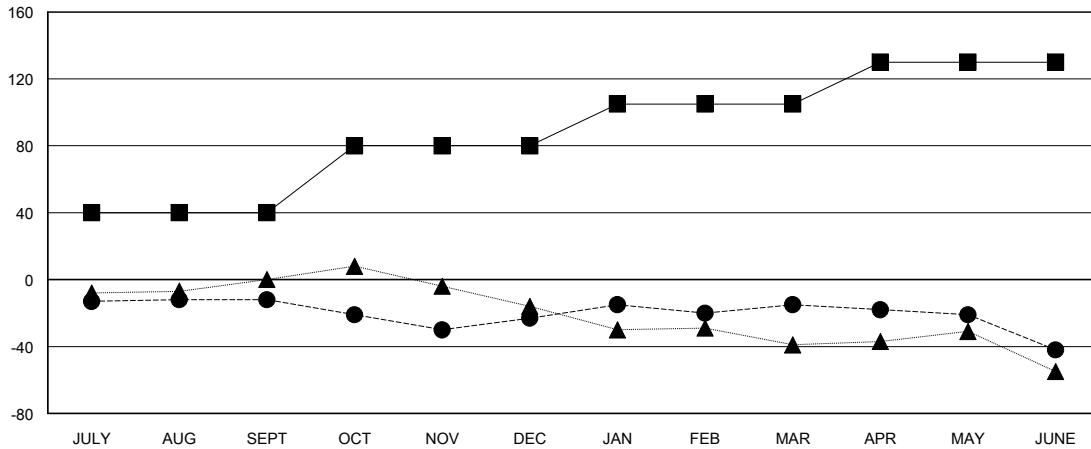
Clubs			
RESULTS FOR 2019-2020			
QUARTER	NEW CLUB GOAL	NEW CLUBS	DROPPED CLUBS
JULY/AUG/SEPT	0	0	0
OCT/NOV/DEC	0	0	1
JAN/FEB/MAR	1	0	0
APR/MAY/JUNE	0	0	0

Members			
RESULTS FOR 2019-2020			
QUARTER	MEMBER GROWTH NET GOAL	MEMBER GROWTH ACTUAL	DROPPED MEMBERS ACTUAL (including transfers)
JULY/AUG/SEPT	40	34	44
OCT/NOV/DEC	40	25	36
JAN/FEB/MAR	25	35	26
APR/MAY/JUNE	25	14	41

GOALS AND ACTUAL NEW CLUBS CUMULATIVE



GOALS AND ACTUAL MEMBERS CUMULATIVE



DROPPED CLUBS: 1	31 CLUBS OF 56 ADDED 1 OR MORE NEW MEMBERS	GENDER DISTRIBUTION MALE 990 (68.80%) FEMALE 449 (31.20%)
DROPPED MEMBERS DECEASED 21 CLUB CANCELLED 0 OTHER 126 TOTAL 147	CLICK HERE FOR CUMULATIVE MEMBERSHIP DATA	TOTAL FAMILY UNIT MEMBERS 268 FAMILY MEMBERS PAYING HALF DUES 139